



Governance, Risk & Compliance

TSoftPlus Installation Guide

Document Preparation

2019.2

Governance, Risk & Compliance

This publication was written for TSoftPlus™

Publication Information / Version

Document Title: TSoftPlus Installation Guide

Release Date: August 2019

Distributed Subject to Terms of a License or other Agreement

The contents of this publication, including its appendices, exhibits, and other attachments, as updated or revised, are highly confidential and proprietary to Wolters Kluwer Financial Services, Inc. or its subsidiaries or affiliates ("Wolters Kluwer Financial Services"). This publication is distributed pursuant to a Non-Disclosure Agreement, Evaluation Agreement, License Agreement and/or other similar agreement(s) with Wolters Kluwer Financial Services, Inc. or its subsidiary or affiliate. Unless otherwise specifically provided in such agreement(s), the reproduction of this publication is strictly prohibited. Use and distribution of this publication are also subject to the responsibilities and obligations of such agreement(s), which require confidential treatment of this publication and its contents. Information in this guide is subject to change without notice and does not represent a commitment on the part of Wolters Kluwer Financial Services.

Do Not Reproduce or Transmit

Unless otherwise specifically authorized in the agreement or license under which this publication has been provided, no part of this publication may be posted, played, transmitted, distributed, copied or reproduced in any form or by any means, electronic or mechanical, including photocopying, recording, or retaining on any information storage and retrieval system, without prior written permission from Wolters Kluwer Financial Services.

Requests for permission to reproduce content should be directed to Wolters Kluwer Financial Services, Inc., Corporate Legal Department, by telephone at 1-800-397-2341.

Not a Substitute for Legal Advice

This publication is intended to provide accurate and authoritative information about the subject matter covered based upon information available at the time of publication. Examples given in this publication are for illustrative purposes only. Development of this publication and the software (including forms, disclosures, reports, and other documents generated by the software) or other products that it describes was based on Wolters Kluwer Financial Services' understanding of various laws, regulations and commentaries. Wolters Kluwer Financial Services cannot and does not guarantee that its understanding is correct. This publication is not intended, and should not be used, as a substitute for legal, accounting, or other professional advice. Wolters Kluwer Financial Services is not engaged in providing legal, accounting or other professional services. If legal or other professional assistance is required, you should seek the services of a competent professional. We encourage you to seek the advice of your own attorney concerning all legal issues involving the use of this publication and any products described in this publication. If your interpretations or your counsel's interpretations are contrary to those expressed in this publication, you should of course, follow your/your counsel's interpretations.

The following notice is required by law:

Wolters Kluwer Financial Services' PRODUCTS AND SERVICES ARE NOT A SUBSTITUTE FOR THE ADVICE OF AN ATTORNEY.

Warranty Disclaimer

Except only for the warranties (if any) expressly set forth in the agreement(s) under which this publication is provided (i.e., your agreement or license for the described product), this publication is provided "as is", and Wolters Kluwer Financial Services makes no warranty, express, implied, by description, by sample or otherwise, and in particular and without limitation, makes no implied warranties of merchantability or fitness for purpose. No modifications to this Warranty Disclaimer are authorized unless in writing and signed by the President or a Vice President of the Wolters Kluwer Financial Services entity licensing the product described in this publication.

Attributions and Acknowledgements

All trademarks are the property of their respective owners.

Copyright Information

©2016 Wolters Kluwer Financial Services, St. Cloud, Minnesota

This publication is the confidential information of Wolters Kluwer Financial Services. Distribution of this publication is subject to restrictions in the license or agreement under which this publication is provided to authorized Wolters Kluwer Financial Institution customers.

All rights reserved.

6815 Saukview Drive

St. Cloud, MN 56303

© 2019 Wolters Kluwer Financial Services, Inc.

Content

System Requirements	4
Introduction	4
Server Hardware	4
Server Software	4
Client Hardware	5
Client Software	5
Standalone	6
Software as a Service (SaaS) Environment	6
Additional Notes	6
Service Packs	6
Backup/Restore	6
Unsupported Operating Systems or Installations	6
Configuration Requirements	7
Enable Windows Identity Foundation	7
Installation Prerequisite – DacFramework.msi version x86	7
Installation Prerequisite – PowerShell 3.0	7
Configuring SQL Server	7
IIS6	8
Add TSoftPlus to your Browser Trusted Sites	9
Internet Explorer	9
Google Chrome	9
Application Installation	10
Installing TsoftPlus	10
Enabling All Macros in Office 2010	14
Enabling Editing in Excel and Word 2010	16
Support Tools	18
Contact Information	19
Ordering and Billing Support - DocOne Default Servicing	19
Ordering and Billing Support	19

System Requirements

Introduction

Use this information as a guide to identify the hardware and software components needed to implement TSoftPlus. All requirements are for systems running TSoftPlus only. You will need to take into consideration any additional software that will be running in your environment, as this will increase the listed requirements.

Server Hardware

These minimum requirements are for TSoftPlus only. Additional hardware may be needed if you are using additional applications.

- Multicore Intel/AMD processor
- 8 GB RAM or greater
- 7 GB hard disk space or greater

Server Software

- One of the following server operating systems:
 - Windows Server 2012
 - Windows Server 2012 R2
 - Windows Server 2016

Note

No 32-bit operating systems are supported for server use.

Note

After disabling TLS, it is required that you enable the use of strong cryptography. More information about how to enable strong cryptography can be found at: <https://docs.microsoft.com/en-us/dotnet/framework/network-programming/tls#configuring-security-viaappcontext-switches>. Also, more information on minimum builds and patches required by SQL Server to support TLS 1.1 or 1.2 can be found at: <https://support.microsoft.com/en-ux/help/3135244/tls-1-2-support-for-microsoft-sql-server>.

- Microsoft SQL Server 2012/2014/2016 (supplied with the TSoftPlus installation files). If you have an existing instance of SQL Server, you will need to have TCP/IP enabled on the machine hosting SQL Server. PowerShell might be required if additional database tools are installed.

Note

If you perform over 100 transactions a year, we recommend you use a full version of SQL Server, not SQL Server Express, so all transaction can be stored in their original form for seven years.

Note

MS SQL Server 2012 Native Client is required to support TLS 1.1 or 1.2. The MS SQL Server 2012 Native Client is already automatically installed as part of newer SQL Server versions

(2012 and later). For other versions it is available at: <https://www.microsoft.com/en-us/download/details.aspx?id=50402>.

- Internet Connectivity
- Internet Information Services (IIS) 6 or later. This program must be installed and functional on the server before installing TSoftPlus. Wolters Kluwer Financial Services cannot provide assistance with implementing IIS beyond the formation contained in the TSoftPlus Installation Guide.

Note

IIS6 compatibility tools need to be installed as a prerequisite on Windows 2008 or Windows 7. For more information, refer to the IIS6 section in the TSoftPlus Installation Guide.

- Microsoft .NET 4.6.2 Framework
- Windows Identity Foundation Runtime
- Transport Layer Security (TLS) Protocol 1.2 Implements
- .NET Core Runtime 1.0.4 or the most recent 1.X runtime listed, available for download at: <https://www.microsoft.com/net/download/core#/runtime>. Do Not use a 2.X .Net Core runtime.
- .NET Core Windows Server Hosting 1.0.4 or the most recent 1.X runtime listed, available for download at: <https://www.microsoft.com/net/download/core#/runtime>. Do not use a 2.X .Net Core runtime.

Client Hardware

Additional hardware requirements to run TSoftPlus for the client are generally not needed. You should take into account all software that you anticipate using in selecting a suitable hardware platform. The hardware you select to support a particular operating system should be adequate for daily use of the TSoftPlus client.

Client Software

All users within an institution must use the same version of Microsoft Office to successfully open and save documents using the Loan Authorization Wizard and Financial Analysis Spreadsheets. Required software, including the operating system, includes:

- Windows 7 Professional or Ultimate, 32- or 64-bit
- Windows 8.1. 32- or 64-bit
- Internet connectivity
- Microsoft .Net 4.6.2 Framework
- Microsoft Word 2010, 2013, 2016 or 365 (as included with Office 365)
- Microsoft Excel 2010, 2013, 2016 or 365 (as included with Office 365)
- Microsoft Internet Explorer 11 or later or Google Chrome 19 or later
- Adobe Acrobat Reader 5.0 or later

Note

After disabling TLS 1.0, we recommend you enable the use of strong cryptography. More information about how to enable strong cryptography can be found at: <https://docs.microsoft.com/en-us/dotnet/framework/network-programming/tls#configuring-security-via-appcontext-switches>

Standalone

For Standalone installations, TSoftPlus requires the use of Microsoft Word and Excel. Therefore, due to simultaneous operation, a 64-bit operating system with a minimum of 8 GB RAM is recommended.

Software as a Service (SaaS) Environment

More detailed information on software and hardware requirements for using the SaaS version of TSoftPlus can be found in the latest *TSoftPlus_System_Requirements_SaaS.pdf*.

Additional Notes

Service Packs

The most current service pack is required for all Microsoft applications.

Backup/Restore

Backups are the sole responsibility of your institution. Your backup software may require an additional module to allow backing up of database files.

Unsupported Operating Systems or Installations

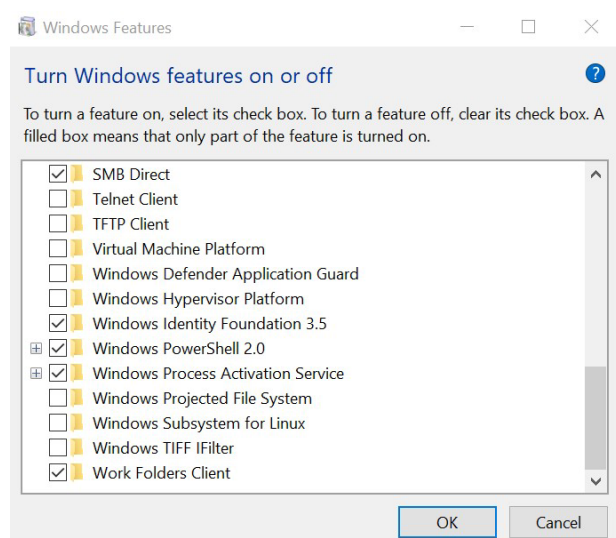
The following operating system or installation environments are not supported or no longer supported by TSoftPlus:

- Novell Netware - TSoftPlus utilizes Microsoft IIS to create the screens and Microsoft SQL Server to manage the database and these cannot be installed to or run from a Novell NetWare file server.
- Microsoft Small Business Server
- Microsoft BackOffice Server
- Active Directory Server (Domain Controllers) - TSoftPlus should not be installed on a domain controller.
- Exchange Server - TSoftPlus should not be installed on a Microsoft Exchange Server.
- Windows Millennium Edition
- Windows XP, server or client
- Windows Vista Home
- Windows 7 Home Premium
- Windows Server 2003
- Windows Server 2008

Configuration Requirements

Enable Windows Identity Foundation

For both new and update installations, you need to confirm that the Windows Identity Foundation (WIF) has been enabled. This is done through the **Turn Windows features on or off**. To open the **Windows Features** window go to the **Control Panel > Programs** and select **Turn Windows features on or off**. Scroll down the list to **Windows Identity Foundation** and make sure the checkbox is checked.



This example is for Windows 10 and varies depending on the operating system.

Installation Prerequisite – DacFramework.msi version x86

The x86 version of DacFramework.msi is now required. The file “SQLPackage.exe” must be located in the C:\Program Files (x86) path for the installer to find it. The package can be obtained from:

<https://docs.microsoft.com/en-us/sql/tools/sqlpackage-download?view=sql-server-2017>

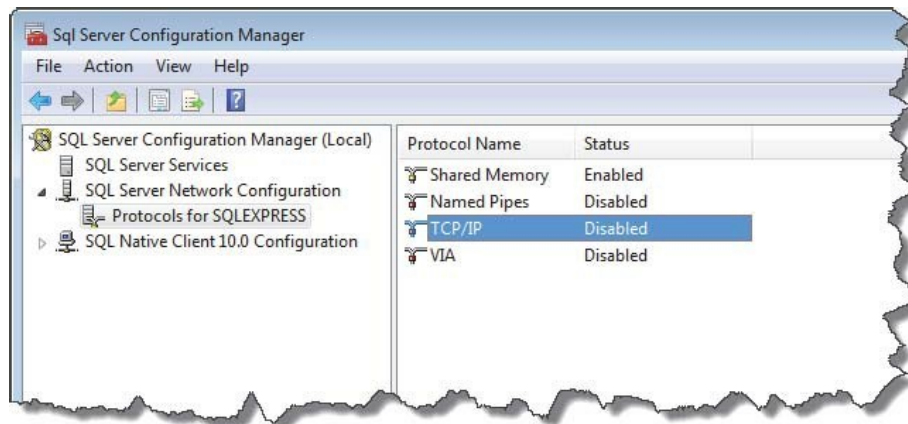
Installation Prerequisite – PowerShell 3.0

You will need to download and install PowerShell 3.0 before installing or updating TSoftPlus.

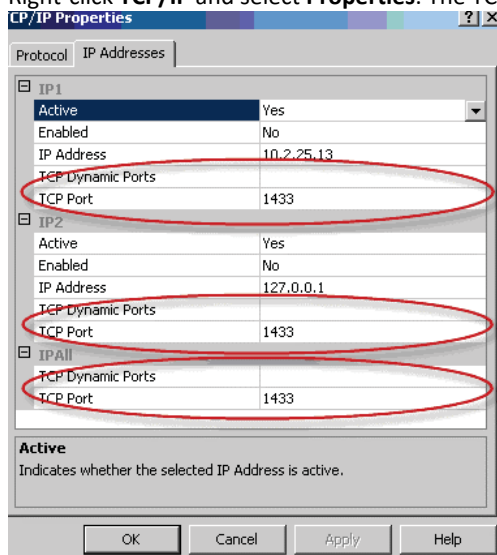
Navigate to the Microsoft download and install page for PowerShell 3.0. Using the link below, you will be taken to the page with specific installation instructions for your operating system: <https://www.microsoft.com/en-us/download/details.aspx?id=34595>

Configuring SQL Server

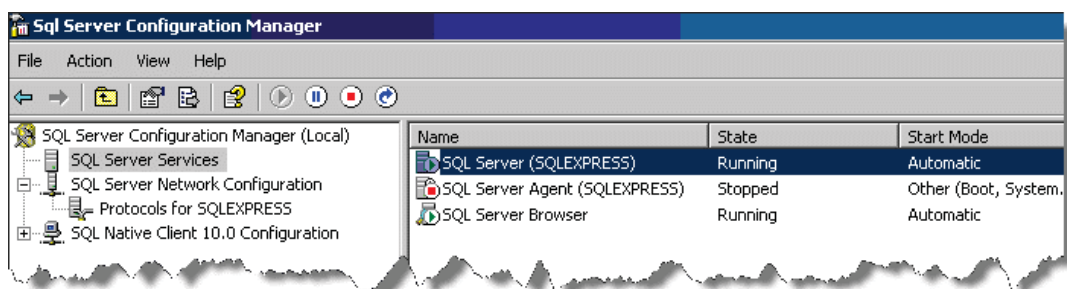
1. Open the SQL Server Configuration Manager.



2. Expand **SQL Server Network Configuration**.
3. Select **Protocols for SQLEXPRESS**.
4. Right-click **TCP/IP** and select **Enable**. The status changes to Enabled.
5. Right-click **TCP/IP** and select **Properties**. The TCP/IP Properties window is displayed.



6. Clear the value for each TCP Dynamic Ports field and enter 1433 for each TCP Port, as shown above.
7. Select **OK** to accept the settings and return to the SQL Server Configuration Manager Window.



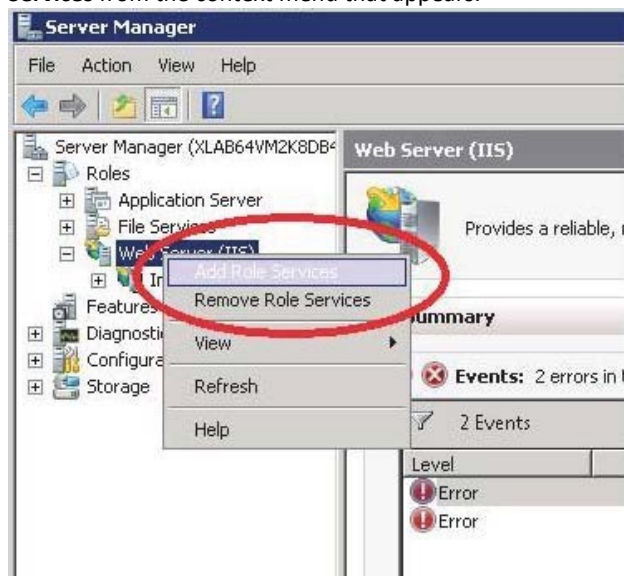
8. Select **SQL Server Services**.
9. Right-click on **SQL Server (SQLEXPRESS)** and select **Restart**.

IIS6

For TSoftPlus to function properly, you must install IIS6 on the computer prior to installing TSoftPlus.

1. Log on to the Server. The Server Manager window is displayed automatically as you log on.

2. Within the navigation pane, expand the **Roles** node and right-click on **Web Server (IIS)** and select **Add Role Services** from the context menu that appears.



The Add Role Services window is displayed.

3. Scroll down to and expand **Management Tools**.
4. Ensure that all IIS 6 services are selected and select **Install**.

Note

The above image displays the services after they have been installed.

Add TSoftPlus to your Browser Trusted Sites

For the new Administration single logon to work properly you will need to add your TSoftPlus URL to your intranet as a Trusted Site via your browser.

Different techniques will be needed depending on whether you are using Internet Explorer or Chrome to work with TSoftPlus.

Internet Explorer

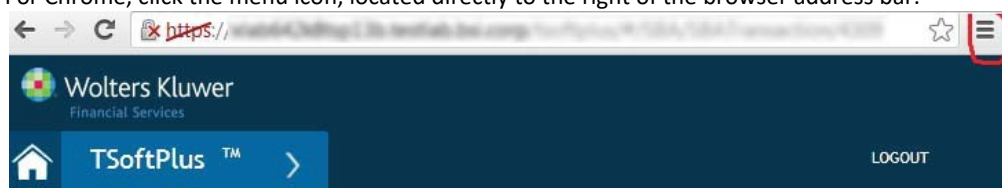
To configure Internet Explorer:

1. Login to TSoftPlus from Internet Explorer.
2. Select the URL from the browser address bar and copy it into the Clipboard.
3. From the browser menu choose Tools, Internet Options, Security tab, Local Intranet.
4. Select **Sites** and **Advanced** and add your TSoftPlus URL to the Local Intranet zone. If the URL is not in the **Add this website in the zone file**, paste it in from the Clipboard.
5. Select **Close** and **OK** until you have returned to your browser window.

Google Chrome

To configure Chrome:

1. Login to TSoftPlus from Google Chrome.
2. Select the URL from the browser address bar and copy it into your Clipboard.
3. For Chrome, click the menu icon, located directly to the right of the browser address bar.



4. In the Privacy section, select **Settings, Show Advanced settings**. Select **Content Settings**.
5. In the Content settings window scroll down to the Pop-ups section, select **Manage exceptions** and paste the address from your Clipboard into the textbox.
6. Select **OK** to save your settings.

Application Installation

Note that there is not a separate installation for a standalone or workstation configuration for TSoftPlus. If you wish to use TSoftPlus in a standalone configuration, select the Complete installation and use the machine as a workstation.

If you are hosting your TSoftPlus databases on a separate server from the application, you must run the database installation on the database server machine first. All other components must then be installed onto the TSoftPlus server after the completion of the database installation.

Note

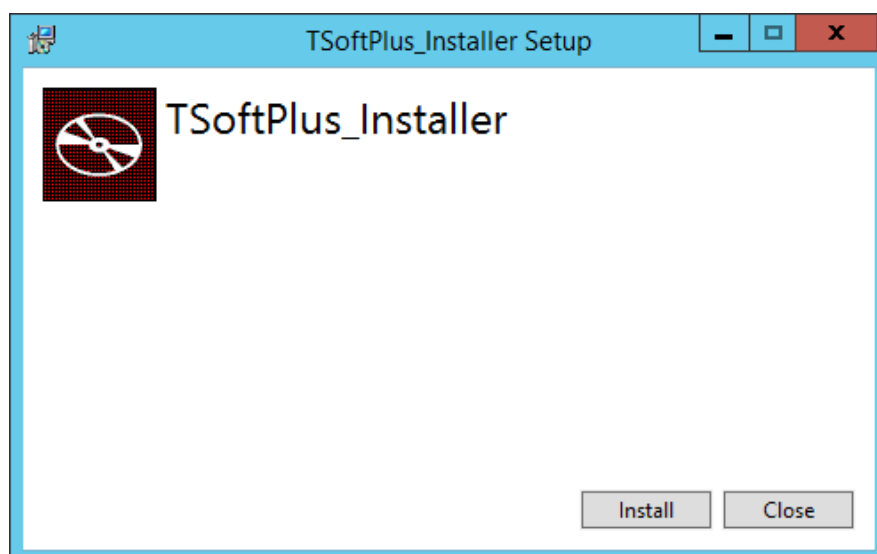
If you have an existing instance of SQL Server, you will need to have TCP/IP enabled on the machine hosting SQL Server for TSoftPlus to work properly.

Installing TsoftPlus

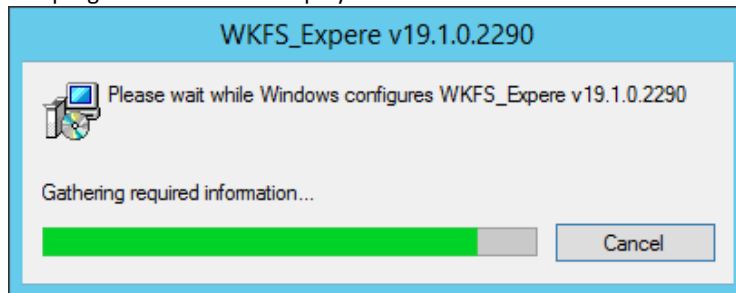
Important

If updating your version of TSoftPlus: Before attempting to update, ensure you have a current backup of all necessary databases.

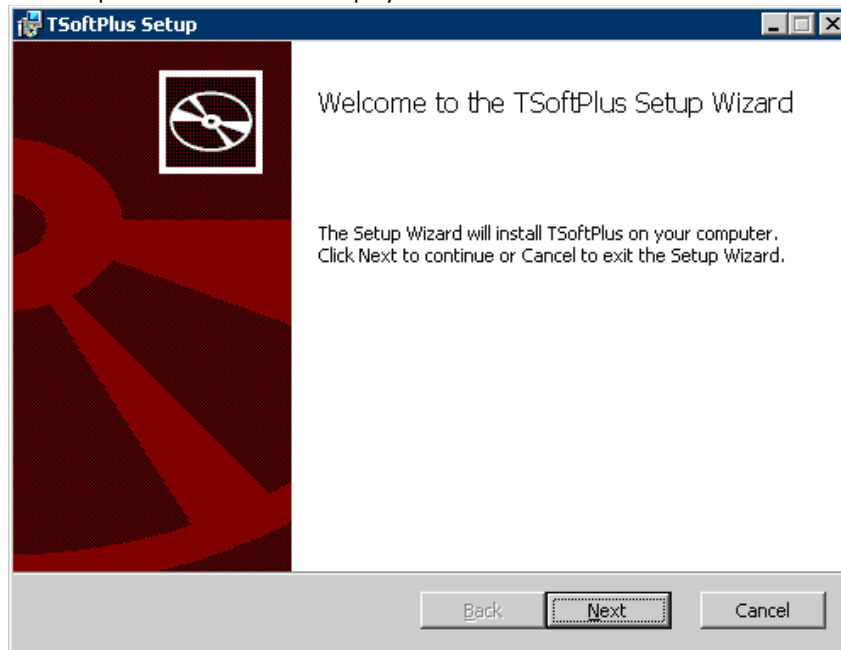
1. Locate and double-click the executable file, **TSoftPlus_Installer.exe** inside the downloaded product ISO. The installation application is displayed. Select Install.



2. The progress window will display.



3. The Setup Wizard window will display.



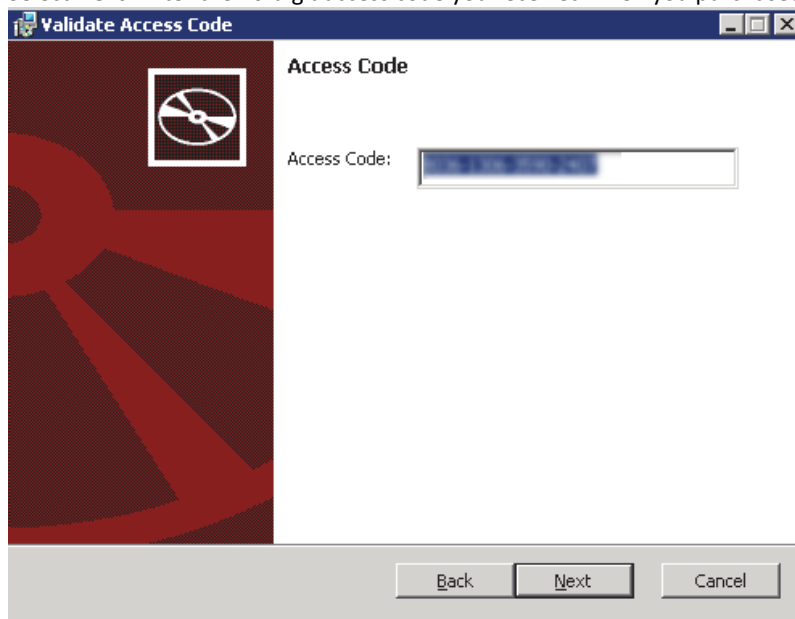
4. Click Next to display the SQL Server Properties screen.



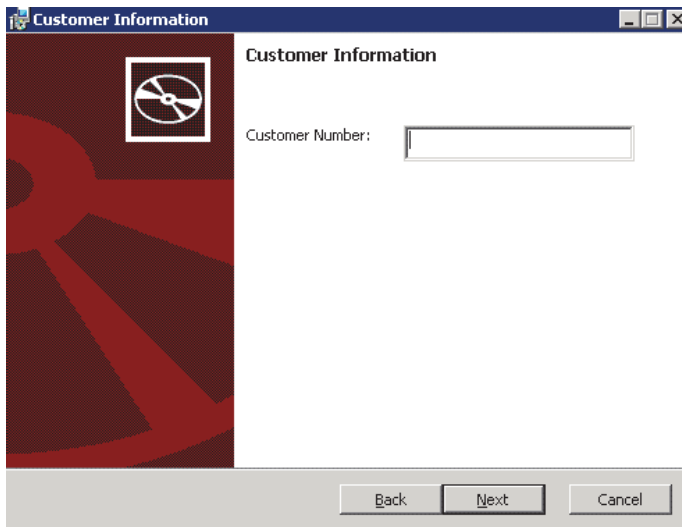
Note

- During a new installation, if the SQL Server is not hosted on the local machine, this must be changed to the name of the machine hosting SQL Server.
 - If you have an existing SQL instance, enter the server and instance name manually. Failing to provide the name of an existing instance causes an error to be displayed.
 - During an Initial or Update installation, the SQL Server Host, Instance, Port, Integrated security settings and Username (if integrated security is selected) are retained and used for future upgrades.
 - SQL Server Port: The default value is the standard port used for SQL Server installations. If you have modified the port for your instance, you must indicate that value in this field.
 - Use Integrity Security: This feature is intended for use when TSoftPlus and the SQL database reside on the same computer.
 - Selected (default): Uses the Windows account of the logged in user to connect to SQL Server.
 - Not Selected: Allows you to enter the credentials of a specific SQL user account when the SQL database is hosted on a remote machine.
-

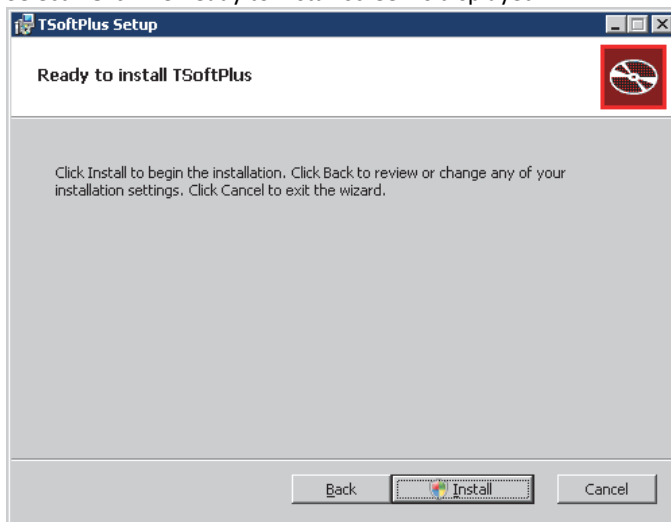
5. Select **Next**. Enter the 16-digit access code you received when you purchased the product.



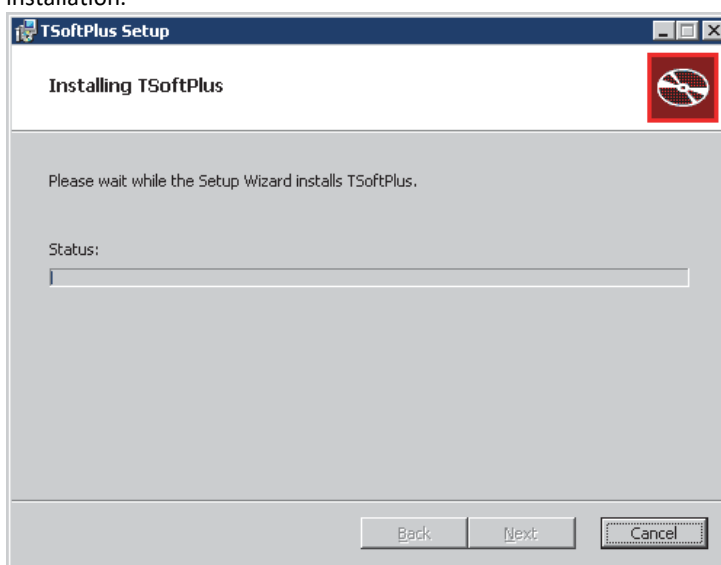
6. Select **Next**. Enter your customer number for the highest parent organization that is license.



7. Select **Next**. The Ready to Install screen is displayed.

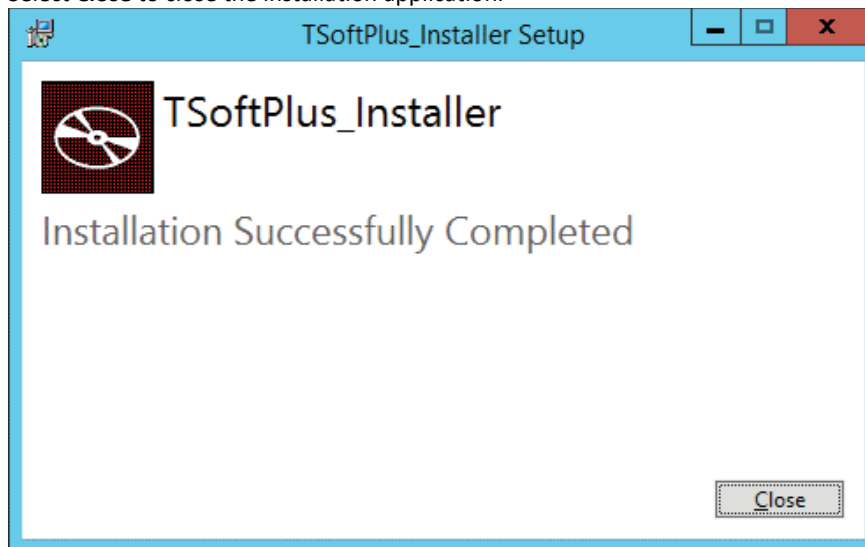


8. Select **Install** to begin the installation process. The Installing screen displays a progress indicator during the installation.



During installation, various command boxes appear to and disappear automatically. When complete, the following screen is displayed.

9. Select **Finish** to close the Setup Wizard application.
10. Select **Close** to close the installation application.



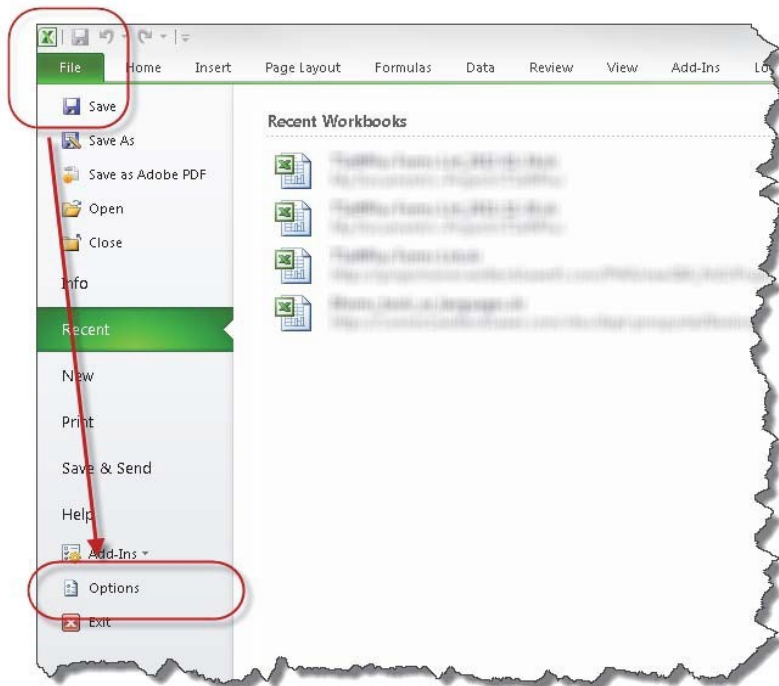
Note

- When installation is finished, you can access TSoftPlus within the TSoftPlus program group in the Windows Start menu.
- The URL used to access TSoftPlus has changed. Customers with a previous installation will need to utilize the new URL to access the application. TSoftPlus can be accessed from the server it was installed on by going to
Start --> Programs --> TSoftPlus -->
TSoftPlus. The new URL is formatted as follows:
`https://{machinename}/TSoftPlus/`
- A log file is created during the installation process that records all installation activity. The filename is:
`msj****.log`. The asterisks represent characters that can change across installations (example; msic2eos.log).
- You can access this log file in the user's TEMP directory. you can locate the TEMP folder as follows:
 1. Select the Windows Start button, and click on Run.
 2. Within the Run dialog, type
`%temp%` and click OK. Windows Explorer is displayed with the current user's temp folder.

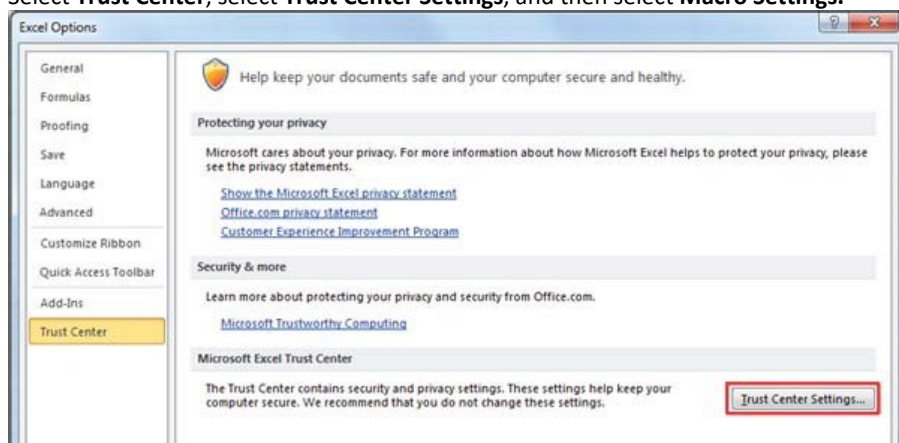
Enabling All Macros in Office 2010

To enable all macros within Excel 2010:

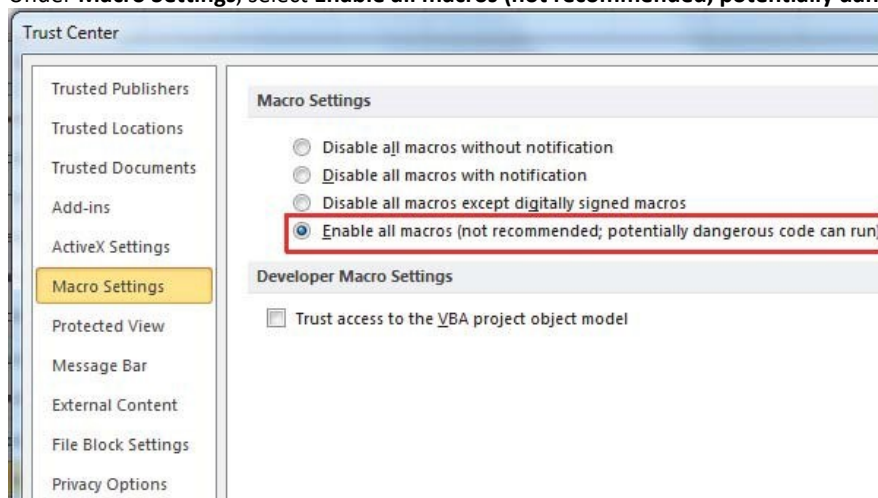
1. Select the **File** tab and then select **Options**.



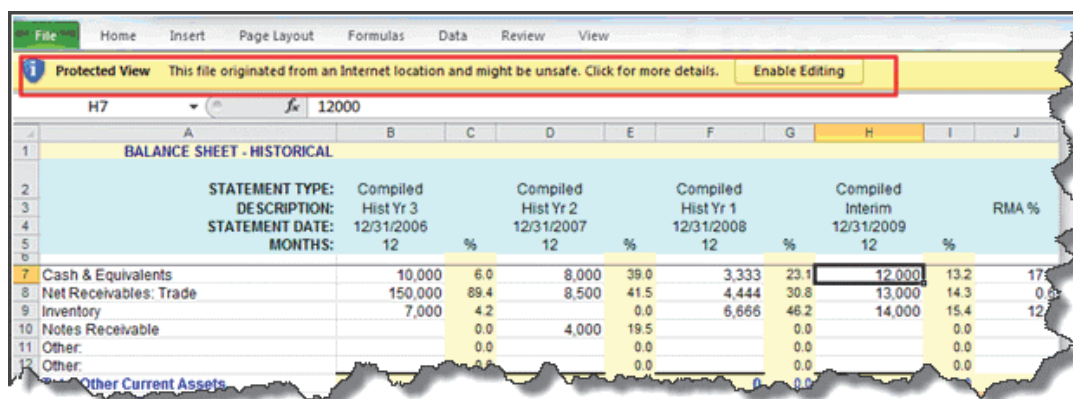
2. Select **Trust Center**, select **Trust Center Settings**, and then select **Macro Settings**.



3. Under **Macro Settings**, select **Enable all macros (not recommended; potentially dangerous code can run)**.

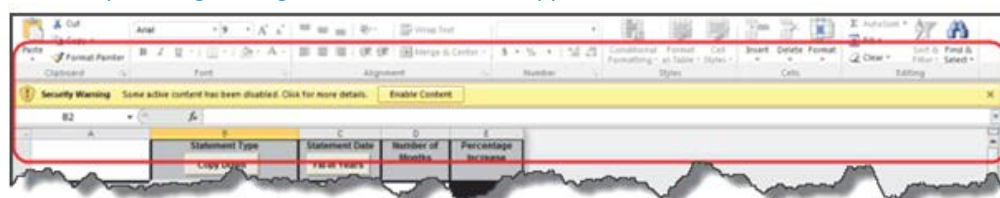


There is a new Trust Center option in Excel 2010 called Protected View. By default, the options are checked which presents a protected view setting when the Financial Analysis template is opened in Excel 2010. You must click on **Enable Editing** button to work with the Excel spreadsheet each time the template is opened.



Note

If the Macro Setting **Disable all macros with notification** is selected; after selecting Enable Editing, the security warning message related to the macro appears.



To avoid the Enable Editing message, the Protected View settings must be modified.

- Within the Trust Center, click **Trust Center Settings....**
- Click **Protected View.**
- Clear the check boxes for **Enable Protected View for files originating from the Internet** and **Enable Protected View for files located in potentially unsafe locations.**

- Select **OK** to close the Trust Center window.

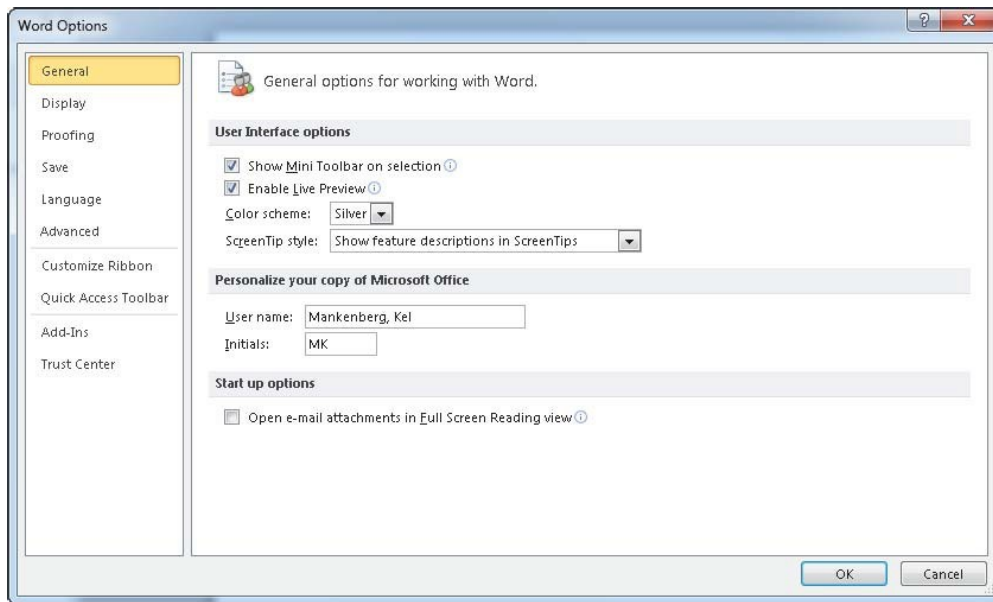
Enabling Editing in Excel and Word 2010

To avoid the Enable Editing message from appearing in Excel and Word 2010, the Protected View settings must be modified. This ensures that when you open the Loan Authorization Wizard, it will appear correctly within Word 2010.

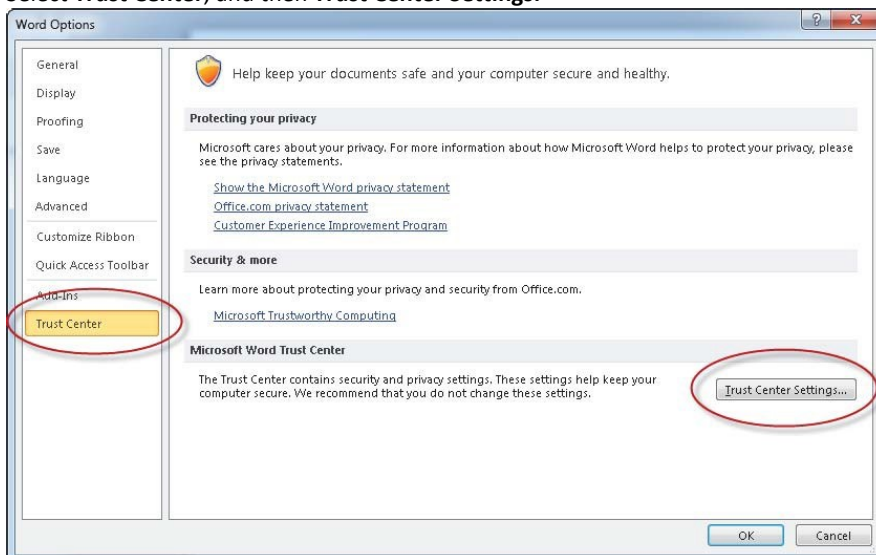
Note

- You can recognize if editing needs to be enabled if the Loan Authorization page is displayed within Word, but the **Update** link does not appear at the top of the first page.
- Important:** This procedure must be completed in both Word and Excel for the Loan Authorization and Macro features to work correctly. This procedure shows the Word Options dialog.

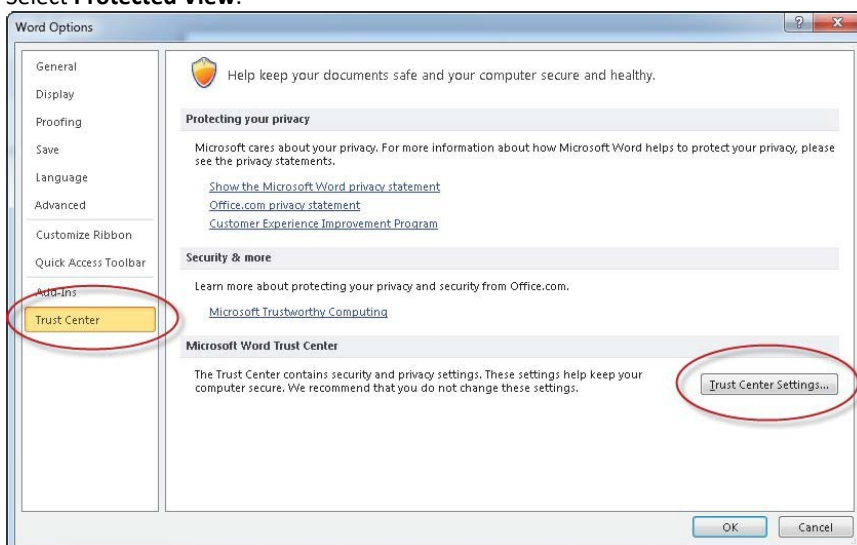
- From the **File** menu, select **Options**. The options dialog appears.



2. Select Trust Center, and then Trust Center Settings.



3. Select Protected View.



4. Clear the check boxes for **Enable Protected View for files originating from the Internet** and **Enable Protected View for files located in potentially unsafe locations**.
5. Select **OK** to accept the changes.

Support Tools

Three support tools are included on the ISO that can be utilized by customers:

- **Backup.cmd** - this can be used to perform a backup of the TSoftPlus databases.
- **Master Password Reset.cmd** - this script can be used to reset the Admin user password in the event that it has been locked out or forgotten. The script will return the reset password on screen.
- **TSoftPlus Database Rollback Script** - If the product installation fails during the database update portion of the install, it may be necessary to clean up the databases before attempting another install. This script that will clean out a database table and roll back the database has been included with the product. Please contact SupportLine for details on running the script if your product installation fails.

Contact Information

How and When to contact us

Important

There may be situations where you provide or are asked to provide data to Wolters Kluwer Financial Services for assistance in troubleshooting, implementation, or the delivery of professional services. When doing so, do not provide actual live data of your customers. Provide sample, fake data that is representative of the issue you are experiencing.

If you have any questions regarding this release, you may contact the WKFS support team by phone or e-mail. Support staff is available Monday through Friday, 7 A.M. to 7 P.M. CST. Voice mail is available after hours and on weekends.

You can visit us on the Internet at <http://www.WoltersKluwerFS.com/>.

Visit our Software Support web site for additional supporting documentation, downloads, frequently asked questions, training, or support information: <http://www.WoltersKluwerFS.com/Support>; you can contact us directly through our website at: <http://www.WoltersKluwerFS.com/software/contact-us/>.

Visit our Software Support web site for documentation, downloads, frequently asked questions, training, or support information: <http://www.WoltersKluwerFS.com/software/tsoftplus-support.aspx>; you can contact us directly through our website at: <http://www.WoltersKluwerFS.com/software/contact-us/>.

- Customer Support Line: 1.800.726.9898, option 1
- Customer Support E-mail: MtgDocPrepSupport@WoltersKluwer.com

You can telephone our SupportLine technicians at 800-274-2711, ext. 1124028

Banking customers can contact SupportLine at 800-529-1582, select option 2; our insurance customers can contact SupportLine at 800-382-2424, select option 2.

Our support staff is available Monday through Friday, 7 A.M. to 7 P.M. CST. Voice mail operates continually, allowing you to leave us a message after hours and on weekends. To help us handle your question as quickly as possible, have these items available before you call:

- product name
- customer number and customer name
- operating system and version number; service pack numbers, if installed

To contact us through email, submit all requests to: tsoftsup@wolterskluwer.com

To contact us through email, submit all requests to: E-Signsupport@wolterskluwer.com.

Send us a fax at (320) 240-4252.

Ordering and Billing Support - DocOne Default Servicing

- **Phone:** 800-552-9410 Ext. 1123011
- **Email:** customersupportdoconebanking@wolterskluwer.com

Ordering and Billing Support

Print and Mail Fulfillment Support: Fulfillment Manager

Phone: 800-552-9410 Ext. 1123651

Email: customersupport@wolterskluwer.com

Technical Support

- **Phone:** 800-726-9898 Ext. 1123205
- **Email:** DefaultServicesSupport@wolterskluwer.com