



Financial & Corporate Compliance

Index Update Instructions

ComplianceOne[®] Solution

Financial & Corporate Compliance

This publication was written for ComplianceOne® Solution® Plus.

Publication Information / Version

Document Title: ComplianceOne® Solution Index Update Instructions

Publication Date: April 2026

Distributed Subject to Terms of a License or other Agreement

The contents of this publication, including its appendices, exhibits, and other attachments, as updated or revised, are highly confidential and proprietary to Wolters Kluwer Financial Services, Inc. or its subsidiaries or affiliates (“Wolters Kluwer”). This publication is distributed pursuant to a Non-Disclosure Agreement, Evaluation Agreement, License Agreement and/or other similar agreement(s) with Wolters Kluwer or its subsidiary or affiliate. Unless otherwise specifically provided in such agreement(s), the reproduction of this publication is strictly prohibited. Use and distribution of this publication are also subject to the responsibilities and obligations of such agreement(s), which require confidential treatment of this publication and its contents.

Information in this guide is subject to change without notice and does not represent a commitment on the part of Wolters Kluwer.

Do Not Reproduce or Transmit

Unless otherwise specifically authorized in the agreement or license under which this publication has been provided, no part of this publication may be posted, played, transmitted, distributed, copied or reproduced in any form or by any means, electronic or mechanical, including photocopying, recording, or retaining on any information storage and retrieval system, without prior written permission from Wolters Kluwer.

Requests for permission to reproduce content should be directed to Wolters Kluwer, Customer Support by telephone at 1-800-397-2341.

Not a Substitute for Legal Advice

This publication is intended to provide accurate and authoritative information about the subject matter covered based upon information available at the time of publication. Examples given in this publication are for illustrative purposes only.

Development of this publication and the software (including forms, disclosures, reports, and other documents generated by the software) or other products that it describes was based on Wolters Kluwer's understanding of various laws, regulations and commentaries. Wolters Kluwer cannot and does not guarantee that its understanding is correct.

This publication is not intended, and should not be used, as a substitute for legal, accounting, or other professional advice. Wolters Kluwer is not engaged in providing legal, accounting or other professional services. If legal or other professional assistance is required, you should seek the services of a competent professional. We encourage you to seek the advice of your own attorney concerning all legal issues involving the use of this publication and any products described in this publication. If your interpretations or your counsel's interpretations are contrary to those expressed in this publication, you should of course, follow your/your counsel's interpretations.

The following notice is required by law:

Wolters Kluwer's PRODUCTS AND SERVICES ARE NOT A SUBSTITUTE FOR THE ADVICE OF AN ATTORNEY.

Warranty Disclaimer

Except only for the warranties (if any) expressly set forth in the agreement(s) under which this publication is provided (i.e., your agreement or license for the described product), this publication is provided “as is”, and Wolters Kluwer makes no warranty, express, implied, by description, by sample or otherwise, and in particular and without limitation, makes no implied warranties of merchantability or fitness for purpose. No modifications to this Warranty Disclaimer are authorized unless they are included in a signed, duly executed, written agreement between you and the Wolters Kluwer entity licensing the product described in this publication.

Attributions and Acknowledgements

All trademarks are the property of their respective owners.

Copyright Information

©2026 Wolters Kluwer N.V. and/or its subsidiaries. All rights reserved.

This publication is the confidential information of Wolters Kluwer. Distribution of this publication is subject to restrictions in the license or agreement under which this publication is provided to authorized Wolters Kluwer Financial Institution customers.

Contents

- ComplianceOne Index Update 4**
- Overview 4
 - Index History Update 4
 - Supported Indexes 4
- Obtaining the Index Update 5**
- Installation Instructions 6**
- What's Next? 9**

ComplianceOne Index Update

Overview

Index History Update

Wolters Kluwer provides updates for the variable rate index histories used in *ComplianceOne*. This download, once installed, will update the index histories with the most current rates available as of the month and year indicated on the filename.

Please note that we update the rates as they become available to use. Some rates are published only on a quarterly basis.

Supported Indexes

- 6 Month LIBOR Index - WSJ
- 26-Week T-Bill Rate
- 1 Year LIBOR Index – WSJ
- 1-Year Treasury Index
- 3-Year Treasury Index
- 5-Year Treasury Index
- 10-Year Treasury Index
- 11th District FHLB Cost of Funds
- JP Morgan Chase Bank Prime
- Wall Street Journal U.S. Prime Rate

Obtaining the Index Update

The installation file is available for download from our Product Download Site (PDS).

1. Go to the PDS website at <https://complianceone.wolterskluwer.com/>
2. Login:

Username
|

Password
Enter your password

[Forgot password?](#)

Log In

© 2019 Wolters Kluwer and/or its affiliates. All rights reserved. Subject to Terms & Conditions. Version: 3.0 1.3095

3. Select the desired **Index Update** and then **Download**:

Title	Version	Type	Download
ComplianceOne January 2019 Index Update		Other	
ComplianceOne 2018.4 Gulpak	2018.4	Release	
ComplianceOne 2018.4	2018.4	Release	
ComplianceOne 2018.3	V2018.3	Release	
ComplianceOne 2018.3 Gulpak	v2018.3	Release	

Export List

1. When prompted to open or save, select **Save** to save the file to your downloads folder. Or select **Save As** to save the file to an alternate location.
2. After the download is complete, navigate to the folder and double-click to run the **ComplianceOneIndexUpdate_Month_Year.ZIP** file.
3. Follow the instructions below to complete the installation.

Installation Instructions

Note

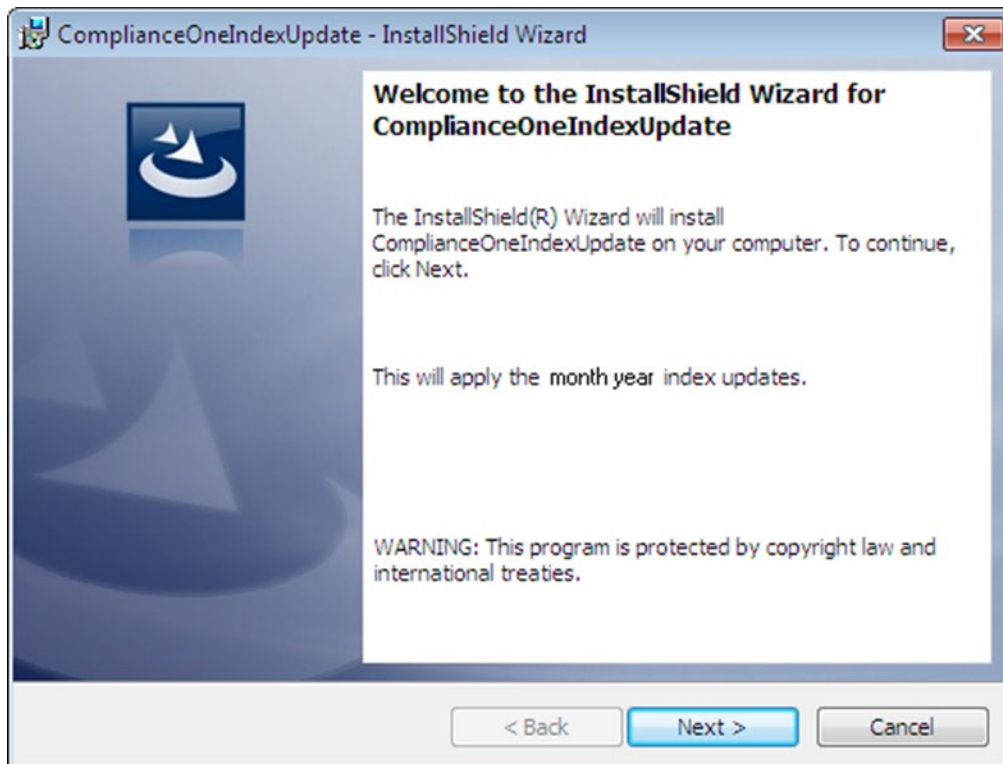
This update must be run on the application server where the *ComplianceOne* executables are installed.

Also, verify you have administrative rights to the location where the *ComplianceOne* application is installed. If you are unsure of whether or not you have appropriate rights, contact your network administrator or technical consultant.

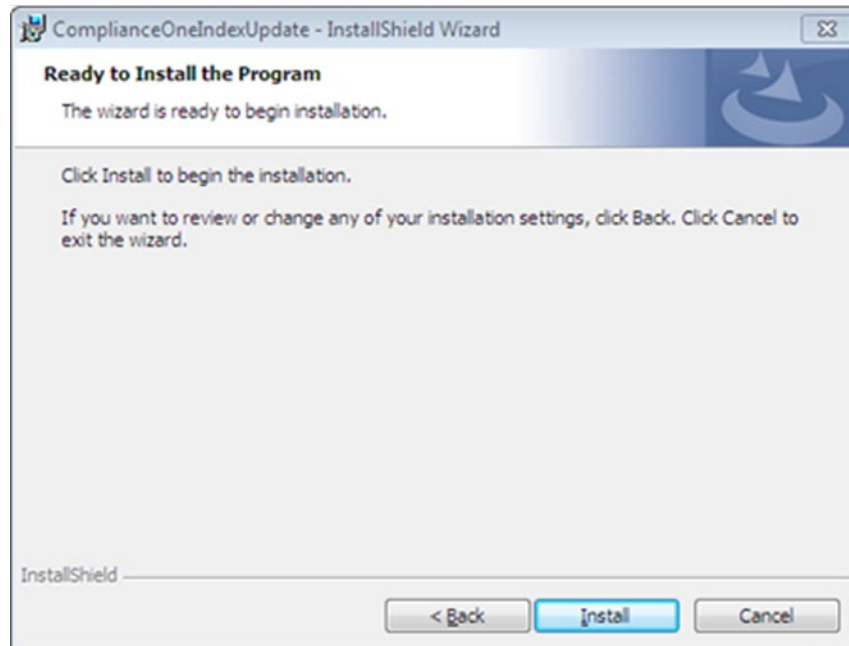
Important

If you have file replication enabled on our ComplianceOne server(s), you will need to disable the file replication before performing the index update. Once the update has successfully completed, you can re-enable file replication.

1. Exit ComplianceOne and verify that all users have exited from the program.
2. Navigate to the folder and double-click the index history update EXE file to begin the installation.
3. The Welcome page displays. Review the message displayed and select **Next** to continue.



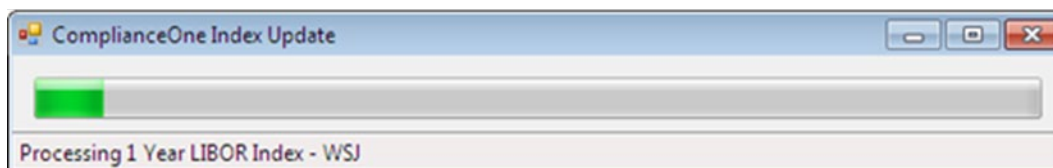
- On the **Ready to Install the Program** page, select **Install** to begin the installation.



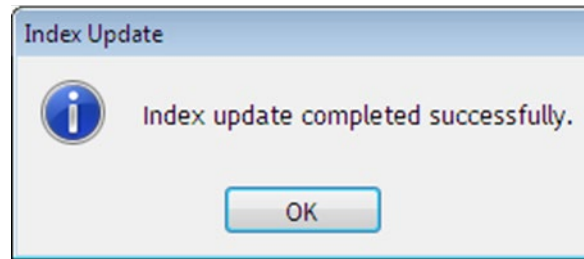
- On the **ComplianceOne Index Update** Program page, select **Continue**.



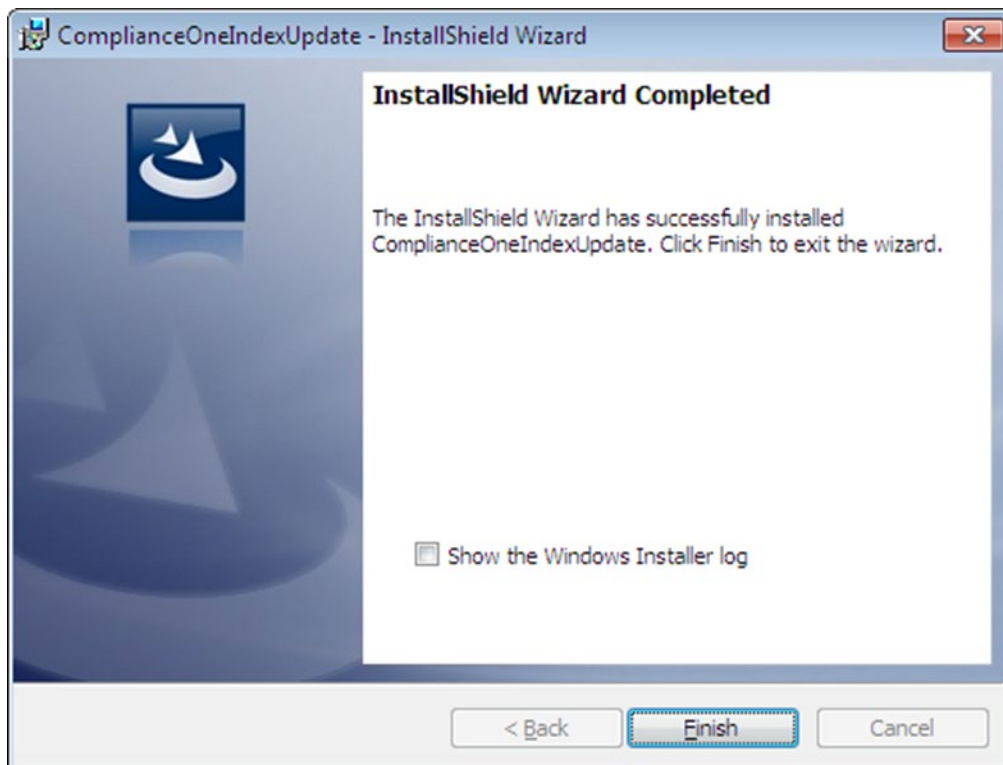
- A progress bar displays as the files are copied to the *ComplianceOne* installation.



-
7. A confirmation window displays when the files copy has completed. Select **OK**.



8. On the **InstallShield Wizard Completed** page, click **Finish** to close the installation.



What's Next?

We will continue to provide monthly index updates on our website.

Please note that we update the rates as they become available to us; some rates are only published on a quarterly basis.

Wolters Kluwer

About Wolters Kluwer

Wolters Kluwer is a global provider of professional information, software solutions, and services for clinicians, accountants, lawyers, and professionals in the tax, finance, audit, risk, compliance, and regulatory sectors. We help our customers make critical decisions every day by providing *expert solutions* that combine deep domain knowledge with specialized technology and services. The company is headquartered in Alphen aan den Rijn, the Netherlands.

About Financial & Corporate Compliance

FCC provides expert compliance services and software solutions for financial institutions, corporations, small and midsize businesses, and law firms with solutions that enable compliance with ever-changing regulatory and legal obligations, improve efficiency, and help achieve better business outcomes. The division offers technology-enabled expert services and software solutions focused on loan compliance, regulatory compliance, legal entity management, and corporate services.

For more information, visit <https://www.wolterskluwer.com>, follow us on [LinkedIn](#), [X](#), [Facebook](#), and [YouTube](#).

Compliance Solutions Support Portal: <https://wolters-kluwer.my.site.com/ComplianceSolutionsSupport/s/>

Customer Service: (800) 552-9410 Available Monday through Friday, 8:00 a.m. to 7:00 p.m., Eastern time.

Compliance Solutions Support Portal: <https://wolters-kluwer.my.site.com/ComplianceSolutionsSupport/s/>

Product Family SupportLine:

Phone: (800) 274-2711 ext. 1123660

Available Monday through Friday, 8 a.m. to 7 p.m., Eastern time.

Email: ComplianceOneSupport@wolterskluwer.com